



## ENGINE

Model	: ISUZU-AH-6HK1X
Type	: Water-cooled, 4 cycle, 6 cylinders, line type direct injection, turbocharger, intercooler, electronic diesel engine
Power	: 216 HP (161 kW) @1800 rpm / SAE J1995 (Gross) : 202 HP (151 kW) @1800 rpm / SAE J1349 (Net)
Max. Torque	: 940 Nm @1500 rpm (Gross) : 903 Nm @1500 rpm (Net)
Displacement	: 7790 cc
Bore and Stroke	: 115 mm x 125 mm
Emission Class	: FAZ III-A (Tier III)* (UNECE R96)
This new engine complies with the Emission Regulations U.S. EPA Tier III, and and EU Stage III-A	

## SUB-FRAME

X Type Lower Frame Construction Pentagon Box Type Chassis	
Shoe	: Triple grouser
No. Of Shoes	: 2 x 51
No. Of Lower Rollers	: 2 x 9
No. Of Upper Rollers	: 2 x 2
Full Trackguard	: Complete
Track Tensioning	: Hydraulic Spring Tensioning

## CAB

<ul style="list-style-type: none"> <li>• Wide cab and easy entrance</li> <li>• Use of six viscomount cabin mountings that dampen the vibrations</li> <li>• Cooled storage room</li> <li>• Colourful, Easy to read TFT indicant monitor</li> <li>• Glass holder, book and object storage pockets</li> <li>• Full automatic digitally air-conditioner</li> <li>• Overclass standarts on the visibility</li> <li>• Pool type floor mat</li> <li>• Improved operator's comfort through versatile adjustable seat</li> <li>• Ergonomically redesigned cabin through relocated switch board, and re-styled travel pedals and levers</li> <li>• USB connected MP3 player</li> <li>• Easy to open the front sliding glass</li> <li>• Front and rear sun visor</li> <li>• Large storage areas</li> <li>• Height adjustable joystick</li> <li>• Improved seat to back angle</li> <li>• The height adjustable seat armrests</li> </ul>	Opera Control System
---	----------------------

## TRAVEL AND BRAKES

Travel	: Fully hydrostatic
Travel Motor	: Axial piston type
Reduction	: 2 stage planetary gear
Travel Speed	
High Speed	: 5,1 km/h
Low Speed	: 2,9 km/h
Max Traction	: 26.070 kgf
Gradeability	: 35° (70%)
Parking Brake	: Hydraulic multi disc type, integrated transmission
Ground pressure (800mm)	: 0,50 kgf/cm <sup>2</sup>

## LUBRICATION

Centralized lubrication system is provided for lubrication all difficult-to-reach parts on the components, such as boom and arm

## HYDRAULIC SYSTEM

<b>Main Pump</b>			
Type	: Double variable displacement axial piston pumps		
Max. Flow	: 2 x 259 L/min		
Pilot Pump	: Gear, 27 L/min		
<b>Relief Valves</b>			
<b>Attachment</b>			
Boom Lifting down	: 150 kgf/cm <sup>2</sup>	Bucket opening	: 240 kgf/cm <sup>2</sup>
Boom Lifting up	: 330 kgf/cm <sup>2</sup>	Bucket closure	: 240 kgf/cm <sup>2</sup>
Travel	: 350 kgf/cm <sup>2</sup>	Arm opening	: 330 kgf/cm <sup>2</sup>
Swing	: 285 kgf/cm <sup>2</sup>	Arm closure	: 240 kgf/cm <sup>2</sup>
Pilot	: 40 kgf/cm <sup>2</sup>		
<b>Cylinders</b>			
Main Boom	: 2 x ø 140 x ø 100 x 1.445 mm		
Stick Cylinder	: 1 x ø 160 x ø 110 x 1.760 mm		
Bucket Cylinder	: 1 x ø 110 x ø 70 x 910 mm		

## OPERA CONTROL SYSTEM

<ul style="list-style-type: none"> <li>• Easy-to-use control panel and menu</li> <li>• Improved fuel economy and productivity</li> <li>• Selection of multi-language on control panel</li> <li>• Automatic powerboost switch-on and switch-off</li> <li>• Overheat prevention and protection system without interrupting the work</li> <li>• Automatic electric cut-off</li> <li>• Maintenance information and warning system</li> <li>• Error mode registry and warning system</li> <li>• GPRS satellite tracking system (Optional)</li> </ul>	<ul style="list-style-type: none"> <li>• Automatic preheater</li> <li>• Auto-Idle and automatic deceleration system</li> <li>• Automatic powershift to improve performance</li> <li>• Maximum efficiency by selection of power and work modes</li> <li>• Real time monitoring of operational parameters such as pressure, temperature, engine load</li> <li>• Anti-theft system with personal code</li> <li>• Possibility to register 26 different operating hours</li> <li>• Rear-view, arm-view camera (Optional)</li> </ul>
---	--

## SWING SYSTEM

Swing Motor	: Axial piston type integrated with shock absorber valves
Reduction	: 2 stage planetary gear box.
Swing Brakes	: Hydraulic multi disc type, automatic warnings
Swing Speed	: 10,2 rpm

## CAPACITY

Fuel Tank	: 480 L	Engine Oil	: 36 L
Hydraulic Tank	: 209 L	Swing Reduction	: 7 L
Hydraulic System	: 400 L	Travel Reduction	: 2x9,5 L
Radiator	: 36 L		

## ELECTRICAL SYSTEM

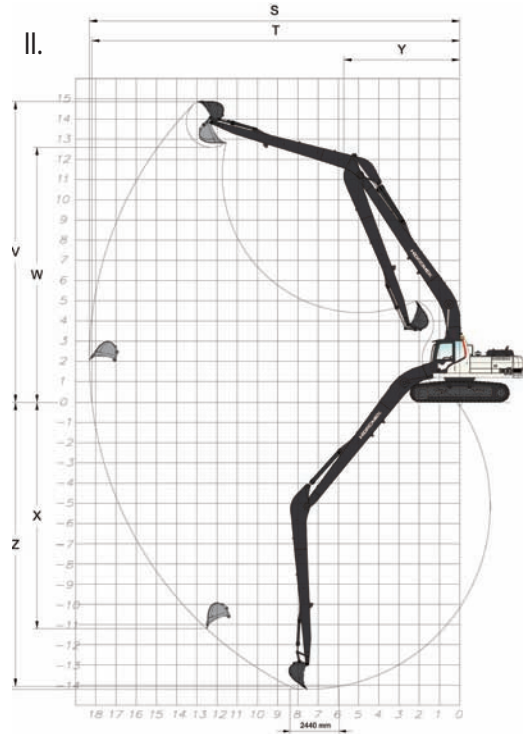
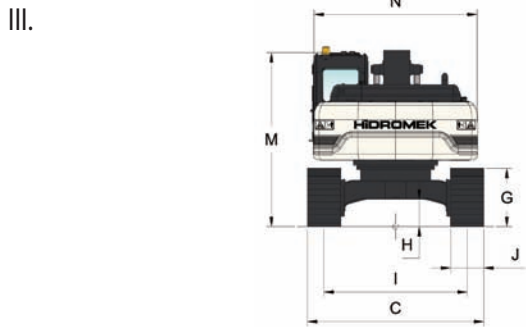
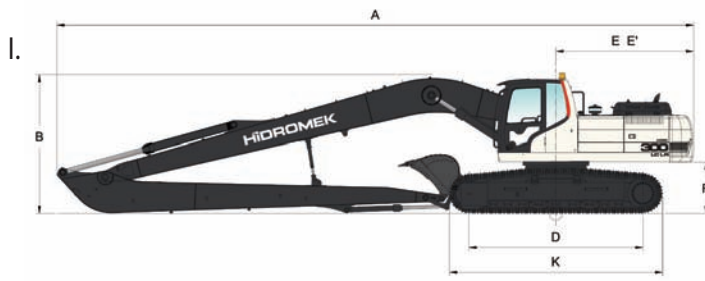
Voltage	: 24V
Battery	: 2 x 12 V x 150 Ah
Alternator	: 24 V / 50 A
Starting Motor	: 24 V / 5,0 kw

## OPERATING WEIGHT

Standard machine operating weight	
Shoe width	Weight
600 mm	34.150 kg
700 mm	34.550 kg
800 mm	34.950 kg

Operational weight, complying with the ISO 6016 standards, includes full fuel tank, hydraulic system and other liquids, 75 kg operator weight and standard equipped machine weight. Optional equipments are not included.

# HMK300LC LR



## I. GENERAL DIMENSIONS

Boom Dimension	10.300 mm
Arm Dimension	7.800 mm
A - Overall Length	14.750 mm
B - Overall Height (to top of boom)	3.200 mm
C - Overall Width	3.200 / 3.300 /*3.400 mm
D - Idler Distance	4.030 mm
E - Counterweight Distance	3.190 mm
E' - Turning Radius	3.240 mm
F - Upper Structure Ground Clearance	1.205 mm
G - Crawler Height	1.065 mm
H - Minimum Ground Clearance	500 mm
I - Track Gauge	2.600 mm
J - Shoe Width	600 / 700 /*800 mm
K - Overall Length of Crawler	4.940 mm
M - Overall Height (to Top of Cab)	3.160 mm
N - Upper Structure Width	2.990 mm

\* Standard

## II. WORKING DIMENSIONS

Boom Dimension	10.300 mm
Arm Dimension	7.800 mm
S - Maximum Digging Reach	18.310 mm
T - Maximum Digging Reach at Ground Level	18.190 mm
U - Maximum Digging Depth	14.200 mm
V - Maximum Digging Height	14.860 mm
W - Maximum Dumping Clearance	12.600 mm
W' - Minimum Dumping Clearance	2.550 mm
X - Maximum Vertical Digging Depth	11.220 mm
Y - Minimum Swing Radius	5.930 mm
Z - Maximum Digging Depth (2440 mm level)	14.090 mm

\* Standard

## III. DIGGING PERFORMANCE

Standard Bucket Capacity (SAE)	0,6 m <sup>3</sup>
Bucket Digging Force (ISO)	7.300 kgf
Arm Crowd Force (ISO)	4.700 kgf

ENG - JANUARY 2019

### STANDARD BUCKET

### DITCH CLEANING BUCKETS

HEAVY DUTY TYPE	STANDARD BUCKET		DITCH CLEANING BUCKET *		DITCH CLEANING BUCKET	
	Width	Capacity	Weight	Number of teeth	Width	Capacity
	985 mm	0,6 m <sup>3</sup>	500 kg	4	2.000 mm	0,6 m <sup>3</sup>
					2.000 mm	0,6 m <sup>3</sup>
					495 kg	
					-	
					-	
ARM	7,8 m	A	A	A	A	A

\* Tilt angle 2 x 35°

## HIDROMEK®

FACTORY - HEAD OFFICE  
Ahi Evran OSB Mahallesi Osmanlı Caddesi No:1 06935 Sincan / ANKARA / TURKEY  
Tel: (+90) 312 267 12 60 Fax: (+90) 312 267 12 39  
www.hidromek.com

Notice:  
Hidromek has the right to modify the specifications and design of the model indicated on this brochure without prior notice.